



ELECTRONIC TRANSFORMER CONTROL

STRi



Transformer controls are used for the gradual speed control of ventilators.

STRi series

- Activation via a 0-10V signal
- Output 5, 7 or 11 steps
- Output class from 3 to 10 Amps
- Fuses for load and electronics
- Control of 2 ventilator groups possible
 - directly, motor auxiliary winding of 230V ventilators or
 - when activating the 2nd ventilator group (e.g. for damper actuating motors)
- Integrated overload protection (thermal contact)
- Alarm in the event of overload and automatic switch to emergency operation
- Minimum air volume switch off
- Digital display of ventilator level and operating mode selected
- Main switch Auto - Off - Emergency operation



Scope of delivery

- 1 transformer control
- Installation accessories

PRODUCT RANGE

TYPE

STRI 3 W

STRI 5 W

STRI 7 W

STRI 10 W

TECHNICAL DATA

Alternating current

X X X X

Nominal current I_{nom}

3 A

X

5 A

X

7 A

X

10 A

X

max. permitted switching current (for both groups) 7 steps

230V / 1.0 * I_{nom}

X X X X

195V / 0.95 * I_{nom}

X X X X

165V / 1.0 * I_{nom}

X X X X

135V / 0.95 * I_{nom}

X X X X

115V / 0.9 * I_{nom}

X X X X

95V / 0.8 * I_{nom}

X X X X

80V / 0.6 * I_{nom}

X X X X

Switching contacts

Auxiliary winding: 0.5 * I_{nom}

X X X X

2nd ventilator group; additional contact: 0.5 * I_{nom}

X X X X

Damper: 230V / 1A, open/closed

X X X X

Fuses

Electronics

SI1

315m At

X X X X

Load

SI2

3.15 At ... 10 At

3.15 5 8 10

Thermal overload protection

X X X X

Activation types

0-10V / 10-0V (set via jumper)

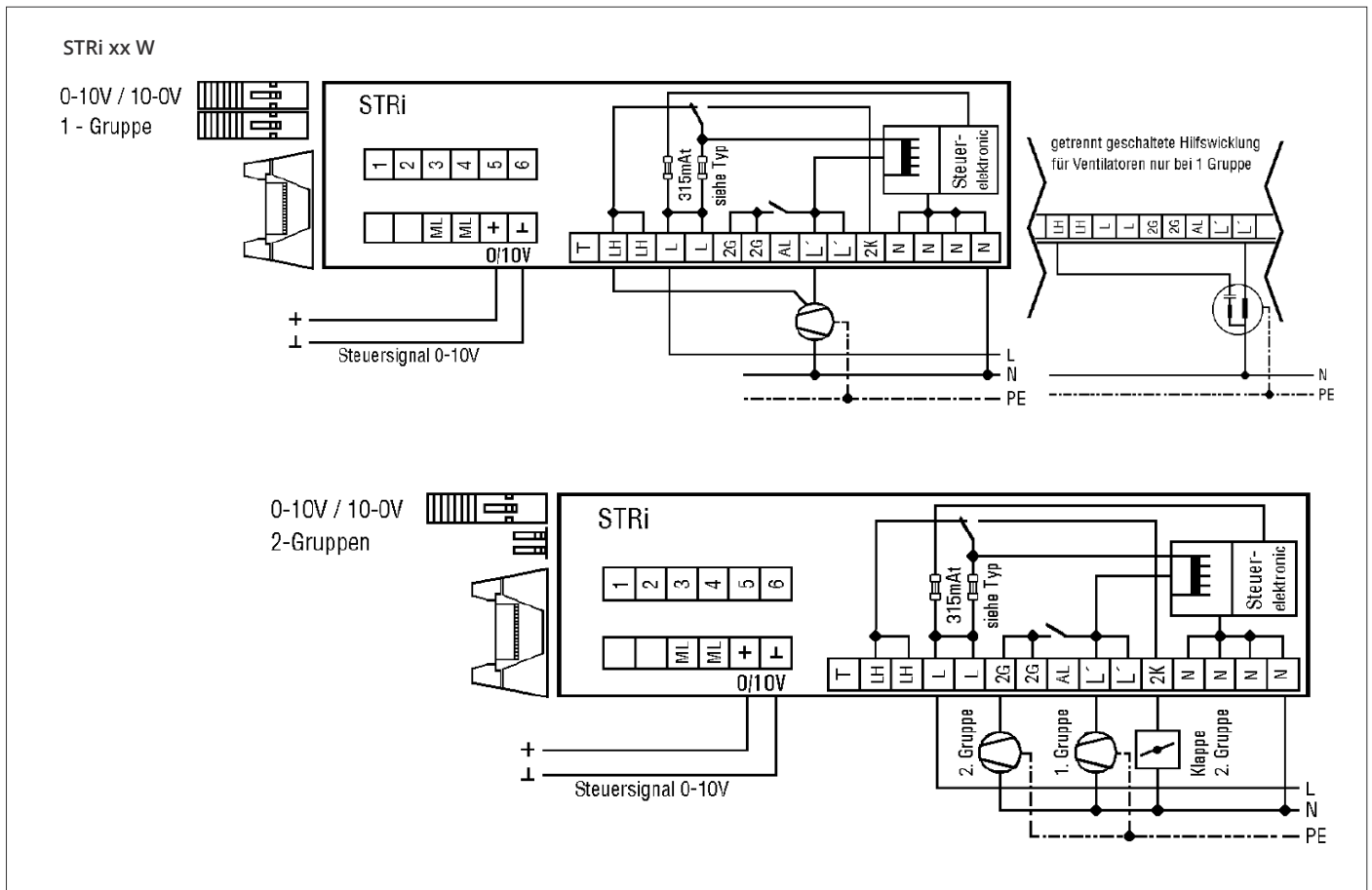
X X X X

5-step thermostat

X X X X

PRODUCT RANGE					
TYPE		STRI 3 W	STRI 5 W	STRI 7 W	STRI 10 W
TECHNICAL DATA					
Connections	1 ventilator (7-step)	X	X	X	X
	2 ventilators in 2 groups (11-step)	X	X	X	X
	Ventilator with separately switched auxiliary winding	X	X	X	X
	Minimum air volume switch off	X	X	X	X
	Alarm connection	X	X	X	X
Operating voltage	230V AC; +10%, -15%	X	X	X	X
Permitted environmental temperature	0°C to 40°C	X	X	X	X
Operating modes	Automatic/manual, off, emergency operation	X	X	X	X
Displays	Two-digit LED display	X	X	X	X
HOUSING					
Material	Plastic	X	X	X	X
Dimensions (W x H x D)	240 x 320 x 140 mm	X	X	X	
	300 x 380 x 140 mm				X
Mounting	Wall fastening	X	X	X	X
Protection system	IP 54	X	X	X	X
Protection class	II according to EN 60730	X	X	X	X
Weight	approx. 5kg to 8kg	X	X	X	X

CONNECTION DIAGRAMS



Subject to change